



*We're There.*

## **PSI** Industrial Sanitary Gauge Assembly



1. Crimp-On Ring Style  
(shown with optional liquid fill)
2. Bayonet Ring Style  
(shown with optional liquid fill)

- The assembly is used to prevent clogging of viscous materials (i.e. paint, ink, heavy/thick liquids) that may solidify within the gauge
- Stainless steel gauge case
- Brass or stainless steel internals
- Glycerin filled seal
- CRN registered
- 1 year warranty

For 3A approved Sanitary Gauges, ask about Winters' PAG and PPG Series

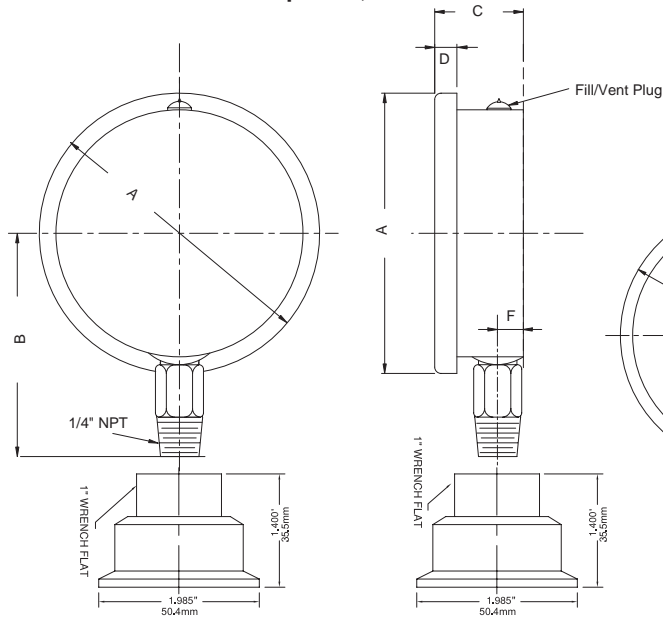
For more information on Winters' Sanitary Gauges, contact 1-800-WINTERS (946-8377) or visit [www.winters.com](http://www.winters.com)

Specifications - Gauge	Crimp-On Ring Style	Bayonet Ring Style
<b>Dial</b>	2.5" (63mm), 4" (100mm), white aluminum with black and red markings	2.5" (63mm), 4" (100mm) white aluminum with black and red markings
<b>Case</b>	AISI 304 SS	AISI 304 SS
<b>Lens</b>	Polycarbonate	Polycarbonate
<b>Ring</b>	AISI 304 SS	AISI 304 SS
<b>Socket</b>	OT 58 brass or AISI 316 SS	316L SS
<b>Connection</b>	1/4" NPT standard with restricted orifice	1/4" NPT
<b>Bourdon Tube</b>	Phosphor bronze C-shaped for pressures up to and including 600 psi (4,147 kPa) unless SS internals are specified AISI 316 SS C-shaped for 1000 psi (6,895 kPa)	316L SS, drawn seamless
<b>Movement</b>	OT 59 brass or SS	304 SS Over/under stops for 4" (100mm) dial only
<b>Pointer</b>	Aluminum, anodized black	2.5" (63mm): Aluminum, anodized black 4" (100mm): Aluminum, anodized black, micrometer adjustable
<b>Welding</b>	Tin/copper alloy for pressures below 600 psi (4,147 kPa), 316 SS TIG Argon arc for pressures 600 psi (4,147 kPa) and above	TIG
<b>Over-Pressure Limit</b>	25% for pressures up to 600 psi (9,653 kPa)	30% for pressures up to 600 psi (4,147 kPa) 15% for pressures over 600 psi (4,147 kPa)
<b>Gasket Material</b>	Silicone rubber for socket EPDM for lens, filling plug and blow-out vent	2.5" (63mm): Buna N for case and block seal, Monoprene for lens seal 4" (100mm): EPDM
<b>Working Pressure</b>	Maximum 75% of full scale value	Maximum 75% of full scale value
<b>Ambient/Process Temperature</b>	-40°F to 150°F (-40°C to 65°C) dry, -4°F to 150°F (-20°C to 65°C) liquid filled	-40°F to 150°F (-40°C to 65°C) dry, -4°F to 150°F (-20°C to 65°C) liquid filled
<b>Accuracy</b>	±1.5% ANSI/ASME Grade B	2.5" (63mm): ±1.5% ANSI/ASME Grade B 4" (100mm): ±1% ANSI/ASME Grade A
<b>Enclosure Rating</b>	IP65	IP66 per UEC 529, UNI 8896

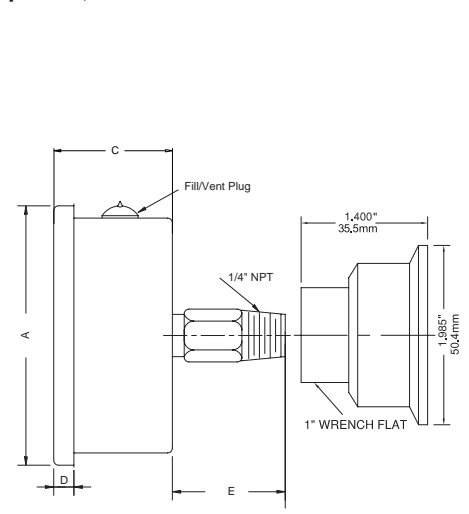
Specifications - Seal	
<b>Housing</b>	AISI 316 SS
<b>Diaphragm</b>	AISI 316L SS, welded
<b>Fill Liquid</b>	Glycerin
<b>Minimum Operating Pressure</b>	30 psi (200 kPa)
<b>Maximum Operating Pressure</b>	1,000 psi (6,900 kPa)
<b>Gauge Connection</b>	1/4" NPT female
<b>Process Connection</b>	1.5" (40mm) and 2" (50mm), Tri-Clamp® fitting standard
<b>Process Temperature</b>	-4°F to 248°F (-20°C to 120°C)
<b>Surface Finish</b>	8 Ra

Tri-Clamp® is a registered trademark of Tri-Clover

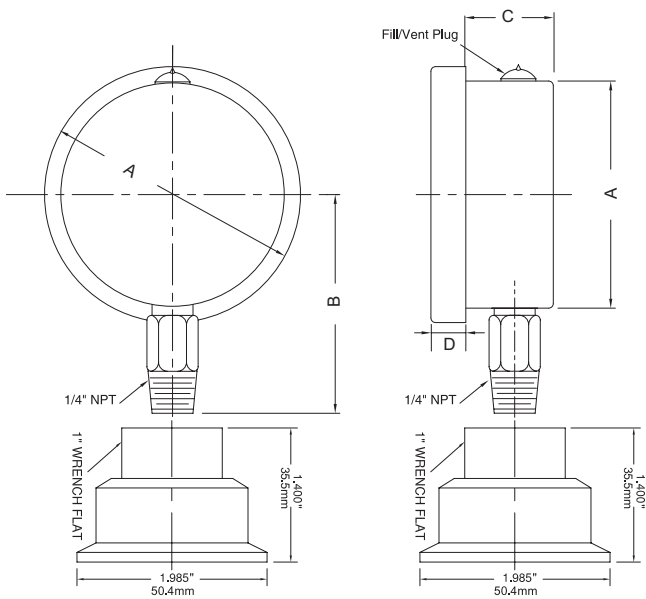
**Crimp-On Ring Style Bottom Connection with 1.5" Tri-Clamp®: #1, #3**



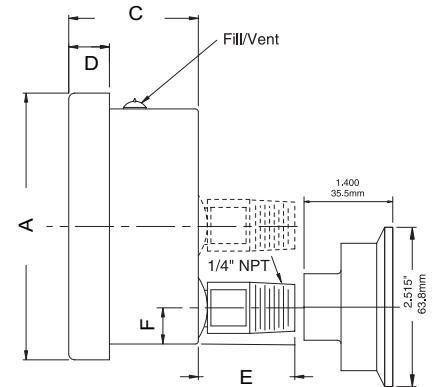
**Crimp-On Ring Style Back Connection with 1.5" Tri-Clamp®: #2, #4**



**Bayonet Ring Style Bottom Connection with 1.5" Tri-Clamp®: #5, #7**



**Bayonet Ring Style Back Connection with 2" Tri-Clamp®: #6, #8**



#	Style	A	B	C	D	E	F
1	2.5" Crimp-On Ring Style Bottom Connection with 1.5" Tri-Clamp®	2.7" (70mm)	2.35" (60mm)	1.1" (28mm)	0.25" (6.3mm)	-	0.4" (10mm)
2	2.5" Crimp-On Ring Style Back Connection with 1.5" Tri-Clamp®	2.7" (70mm)	-	1.1" (28mm)	0.25" (6.3mm)	1.17" (30mm)	-
3	4" Crimp-On Ring Style Bottom Connection with 2" Tri-Clamp®	4.28" (109mm)	3.52" (90mm)	1.4" (36mm)	0.35" (9mm)	-	0.4" (10mm)
4	4" Crimp-On Ring Style Back Connection with 2" Tri-Clamp®	4.28" (109mm)	-	1.4" (36mm)	0.35" (9mm)	1.17" (30mm)	-
5	2.5" Bayonet Ring Style Bottom Connection with 1.5" Tri-Clamp®	2.44" (62mm)	2.35" (60mm)	0.94" (24mm)	0.35" (9mm)	-	-
6	2.5" Bayonet Ring Style CB Connection with 1.5" Tri-Clamp®	2.7" (70mm)	-	1.35" (34mm)	-	1.17" (30mm)	-
7	4" Bayonet Ring Style Bottom Connection with 2" Tri-Clamp®	4.425" (112mm)	3.52" (90mm)	1.35" (34mm)	0.675" (17mm)	-	-
8	4" Bayonet Ring Style LB Connection with 2" Tri-Clamp®	4.425" (112mm)	-	2.15" (54.6mm)	0.675" (17mm)	1.6" (40mm)	0.61" (15mm)

Tri-Clamp® is a registered trademark of Tri-Clover, Inc.

