

Description & Features:

- Gauge designed to be used with most standard double ferrule tube fittings, such as Parker A-Lok®
- Heavy duty, stainless steel, liquid-filled gauge
- Back, bottom, or panel mount configurations
- ±1.5% accuracy
- Facilitates 360° orientation
- Elimination of leak point
- Teflon® free connection
- 5 year warranty

Applications:

- Specifically designed to be utilized with tube fitting applications
- Allows installation where space is limited
- Used where Teflon® free connection is needed
- Used where gauge alignment is critical

| Specifications | |
|-----------------------------|----------------------------------------------------------------------------|
| Dial | 2.5" (63mm) aluminum with red and black markings |
| Case | Grade 304 SS |
| Lens | Polycarbonate |
| Ring | 304 SS, bayonet |
| Block | 316L SS |
| Socket | 316L SS |
| Connection | 1/4" Tube Stub |
| Bourdon Tube | 316L SS |
| Movement | 304 SS |
| Pointer | Aluminum, anodized black |
| Welding | TIG |
| Fill Fluid | Glycerin |
| Over-pressure Limit | 115% full scale |
| Gasket Materials | Neoprene |
| Working Pressure | 75% of full scale |
| Ambient/Process Temperature | -40°F to 150°F (-40°C to 65°C) dry -4°F to 150°F (-20°C to 65°C) filled |
| Accuracy | ±1.5% of full scale |
| Enclosure Rating | IP66 per UEC 529, UNI 8896 |

Teflon® is a registered trademark of Dupont Corporation
A-Lok® is a registered trademark of Parker Hannifin Corporation

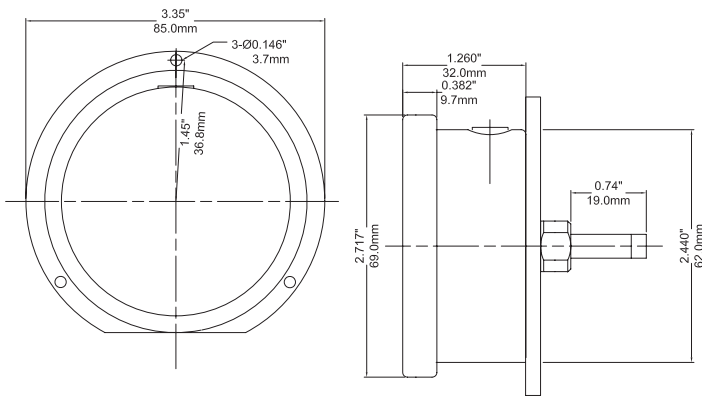
Order Codes (products in bold are normally in stock)

| Dial Size | 2.5 (63mm) | |
|-----------------|------------------|------------------|
| Connection/Tube | 1/4" Bottom | 1/4" Back (CB) |
| 30" Hg Vacuum | PTS820-TS | PTS840-TS |
| 30"-0-15 psi | PTS860-TS | PTS870-TS |
| 30"-0-30 psi | PTS861-TS | PTS871-TS |
| 30"-0-60 psi | PTS862-TS | PTS872-TS |
| 30"-0-100 psi | PTS863-TS | PTS873-TS |
| 30"-0-160 psi | PTS864-TS | PTS874-TS |
| 30"-0-200 psi | PTS866-TS | PTS876-TS |
| 30"-0-300 psi | PTS867-TS | PTS877-TS |
| 0-15 psi | PTS821-TS | PTS921-TS |
| 0-30 psi | PTS822-TS | PTS922-TS |
| 0-60 psi | PTS823-TS | PTS923-TS |
| 0-100 psi | PTS824-TS | PTS924-TS |
| 0-160 psi | PTS825-TS | PTS925-TS |
| 0-200 psi | PTS826-TS | PTS926-TS |
| 0-300 psi | PTS827-TS | PTS927-TS |
| 0-400 psi | PTS880-TS | PTS881-TS |
| 0-600 psi | PTS828-TS | PTS928-TS |
| 0-1,000 psi | PTS829-TS | PTS929-TS |
| 0-3,000 psi | PTS831-TS | PTS931-TS |
| 0-5,000 psi | PTS832-TS | PTS852-TS |

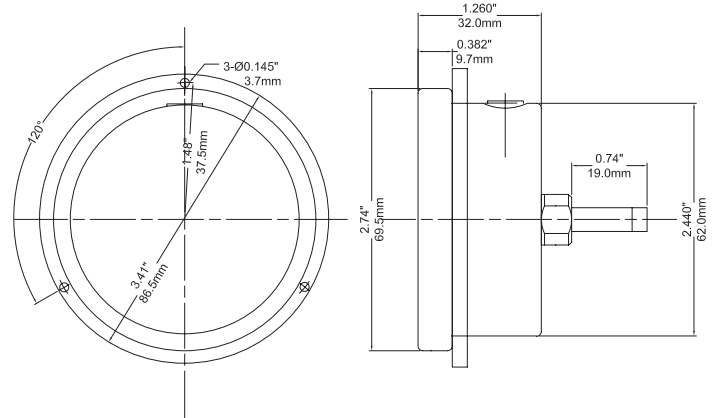
Option suffix for above order codes only:

- DRY = No liquid fill
- SG-25 = 2.5" (63mm) Safety Glass Lens
- 25BF = 2.5" (63mm) Back Flange
- 25UC = U-Clamp for Panel Mounting
- 25FF = Front Flange for Panel Mounting
- 25BOOT = Protective Black Rubber Boot

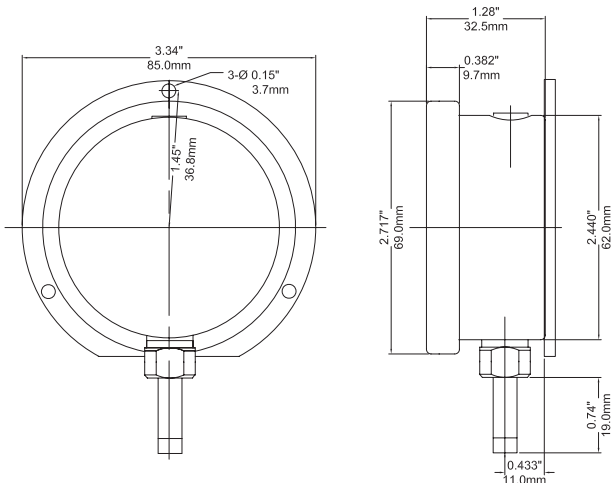
2.5" Back Connection - Back Flange



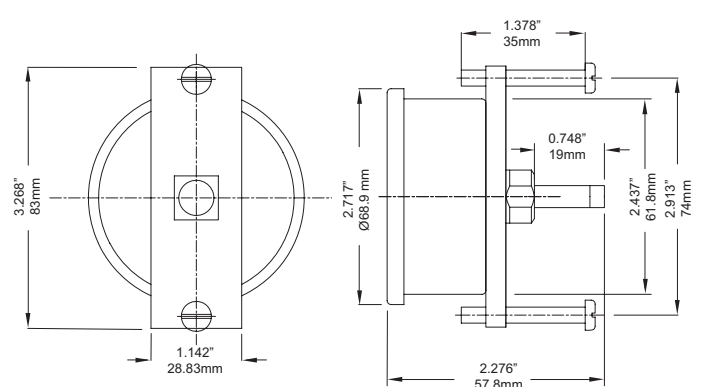
2.5" Back Connection - Front Flange



2.5" Bottom Connection - Back Flange



2.5" Back Connection - U-Clamp



Series Number (for custom, non-standard product)

| | P | T | S | - | | | - | | - | | - | | - | | | - | | - | | | |
|--------------------------------------------------------------|---|---|---|---|--|---|---|--|---|--|---|--|---|--|--|---|--|---|--|--|-----|
| SERIES | | | | | | | | | | | | | | | | | | | | | |
| DIAL SIZE | | | | | | | | | | | | | | | | | | | | | |
| 2.5" (63mm) | | | | | | 2 | 5 | | | | | | | | | | | | | | |
| 4.0" (100mm) | | | | | | 4 | 0 | | | | | | | | | | | | | | |
| CASE MATERIALS | | | | | | | | | | | | | | | | | | | | | |
| 304SS | | | | | | | | | | | | | | | | | | | | | |
| 316SS | | | | | | | | | | | | | | | | | | | | | |
| WETTED PARTS | | | | | | | | | | | | | | | | | | | | | |
| 316SS | | | | | | | | | | | | | | | | | | | | | |
| CONFIGURATION | | | | | | | | | | | | | | | | | | | | | |
| Bottom Connection, Stem Mounting | | | | | | | | | | | | | | | | | | | | | |
| Bottom Connection, Back Flange, Surface Mounting | | | | | | | | | | | | | | | | | | | | | |
| Bottom Connection, Front Flange, Surface Mounting | | | | | | | | | | | | | | | | | | | | | |
| Back Connection, Stem Mounting | | | | | | | | | | | | | | | | | | | | | |
| Back Connection, Back Flange, Surface Mounting | | | | | | | | | | | | | | | | | | | | | |
| Back Connection, Wide Front Flange, (Drilled) Panel Mounting | | | | | | | | | | | | | | | | | | | | | |
| Back Connection, Narrow Front Ring, Panel Mounting (Yoke) | | | | | | | | | | | | | | | | | | | | | |
| CONNECTION SIZE | | | | | | | | | | | | | | | | | | | | | |
| 1/4" | | | | | | | | | | | | | | | | | | | | | |
| THREAD | | | | | | | | | | | | | | | | | | | | | |
| Special | | | | | | | | | | | | | | | | | | | | | |
| PRIMARY SCALE | | | | | | | | | | | | | | | | | | | | | |
| UNITS - See Page 13 | | | | | | | | | | | | | | | | | | | | | |
| RANGE - See Page 13 | | | | | | | | | | | | | | | | | | | | | |
| SECONDARY SCALE | | | | | | | | | | | | | | | | | | | | | |
| UNITS - See Page 13 | | | | | | | | | | | | | | | | | | | | | |
| OPTIONS | | | | | | | | | | | | | | | | | | | | | |
| 316L wetted | | | | | | | | | | | | | | | | | | | | | S C |
| Black Rubber Boot | | | | | | | | | | | | | | | | | | | | | S Z |
| Fluorolube Filled | | | | | | | | | | | | | | | | | | | | | S R |
| Glycerin Filled | | | | | | | | | | | | | | | | | | | | | S E |
| Halocarbon Filled | | | | | | | | | | | | | | | | | | | | | S Q |
| Maximum Adjustable Pointer | | | | | | | | | | | | | | | | | | | | | S J |
| Oxygen Cleaning | | | | | | | | | | | | | | | | | | | | | S L |
| Silicone Filled | | | | | | | | | | | | | | | | | | | | | S D |
| Safety Glass | | | | | | | | | | | | | | | | | | | | | S A |
| Stainless Steel Tag Plate | | | | | | | | | | | | | | | | | | | | | S M |
| StabiliZR™ Movement | | | | | | | | | | | | | | | | | | | | | S 3 |
| Test Certificate | | | | | | | | | | | | | | | | | | | | | S O |
| No Options | | | | | | | | | | | | | | | | | | | | | X X |