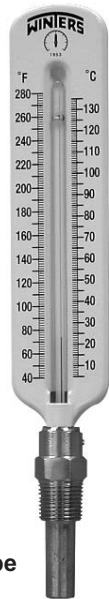


TSW Hot Water Thermometer



Dial Type



Scale Type

Description & Features:

- An economical and accurate way to measure air or water temperatures
- Separable thermowell
- Bi-metallic element (dial type only)
- Dual scale (°F & °C)
- Dial type or vertical scale type
- Easy to install
- 1/2" NPT process connection
- 1 year warranty

Applications:

- Hot water lines, boilers and hydronic heating

Specifications	Dial Type
Dial	2.5" dial (63mm), aluminum, painted white with black and red markings
Case	Aluminum
Lens	Glass
Ring	Steel, chrome plated
Thermowell	Brass (HPB59-1), 1/2" NPT standard, separable
Stem	Brass
Movement	Bi-metallic element
Pointer	Aluminum, painted black
Recalibrator	Standard
Accuracy	±1%

Specifications	Scale Type
Scale/Case	8" (200mm) scale with steel case, painted white with black markings
Tube	#N-16 glass
Fill Liquid	Kerosene, tinted red
Thermowell	Brass (HPB59-1), 1/2" NPT standard, separable
Accuracy	±1%

Order Codes Dial Type (products in bold are normally in stock)

Range	Connection	Code
30°F to 250°F & 0°C to 120°C	1/2" NPT centre back	TSW174
	3/4" Sweatwell	TSW174-SW

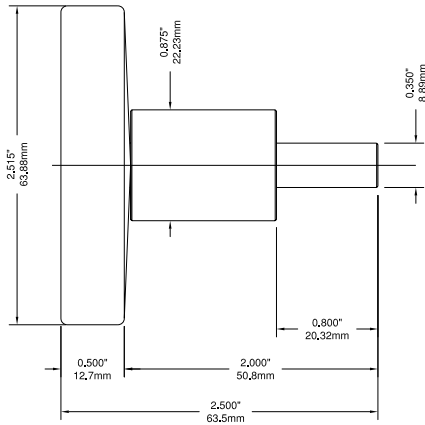
Note: Other ranges, stem lengths, dial and thread sizes available upon request

Order Codes Scale Type (products in bold are normally in stock)

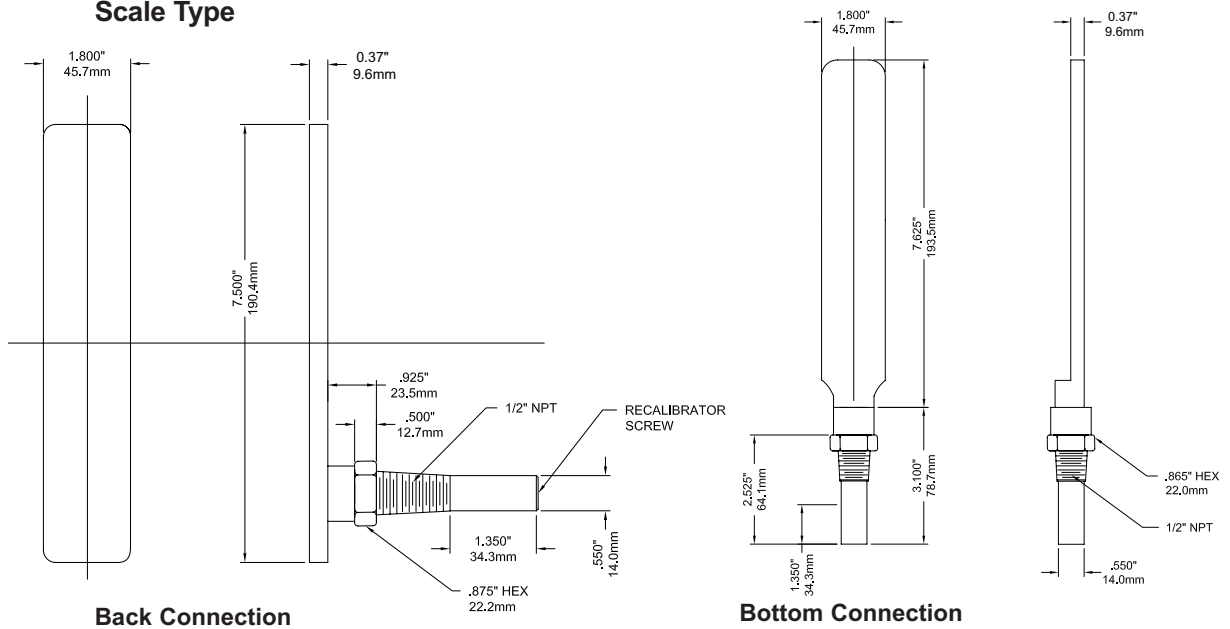
Range	Connection	Code
40°F to 280°F & 5°C to 135°C	Straight	TSW172
40°F to 280°F & 5°C to 135°C	Angle	TSW173

Note: Other ranges and sizes available upon request

Dial Type



Scale Type



Series Number (for custom, non-standard product)



SERIES

TYPE

172 Scale Type

173 Scale Type

174 Dial Type

174SW Dial Type

CONNECTION TYPE

3/8"

1/2"

174 with Sweatwell

Special

CONNECTION THREAD

NPT

BSP

BSPT

2

3

4

5

3

2

4

Z

T

S

A